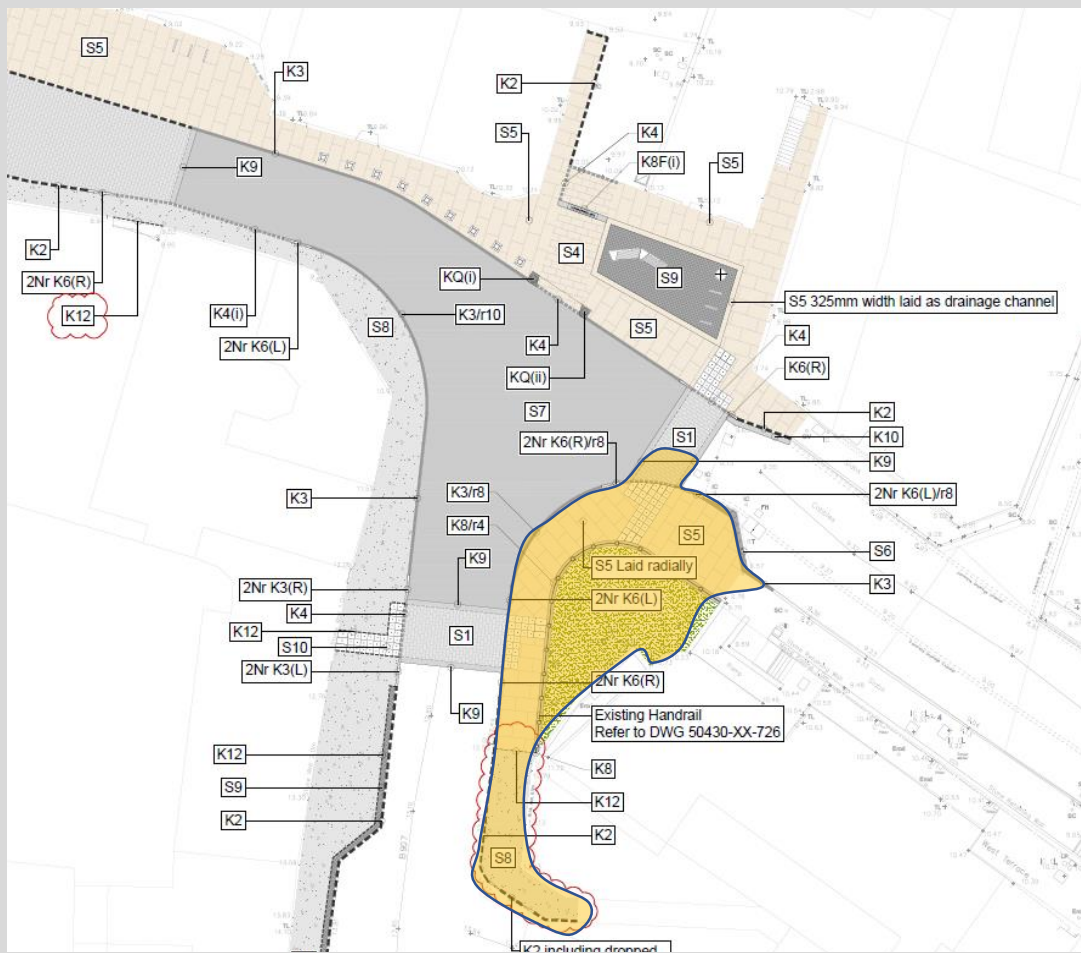
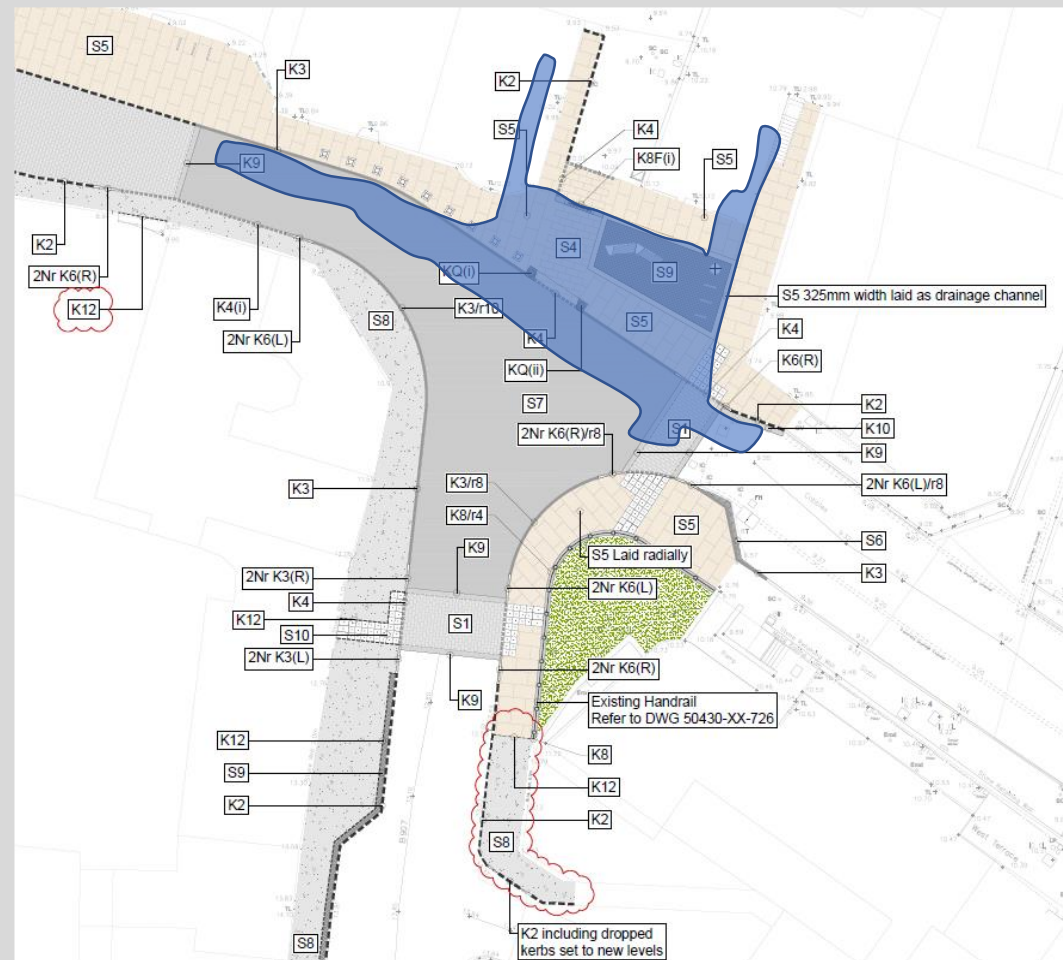


Planned work :



We return to work from Christmas shutdown on 6th of January and we shall recommence firstly with the area shaded *orange* above. It is anticipated that weather permitting we shall be completed here by the end of the January.



On completion of the section shaded *orange* we shall be working within the area above shaded in *blue*. This work shall be for approximately 5 weeks in duration. Access to the local businesses shall be maintained throughout the works.